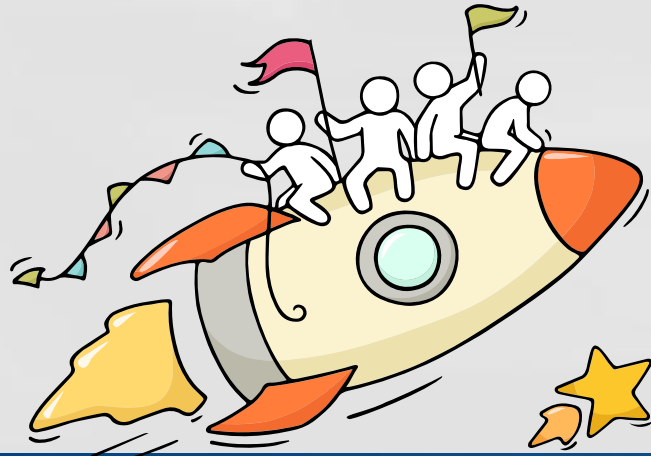


2022 GCE N-Level Results Administrative Briefing



Dear students,

As we gather here today, let
us all celebrate our efforts!



*Finally, we are going to
get our results!*



Think about your opportunities

You may be:

- ☐ You are happy that your results meet your expectations;
- ☐ You are overjoyed that your results exceed your expectations, or;
- ☐ You are worried/upset because your results fall short of your expectations.



As there are **many pathways and opportunities**, remember that **everyone's** learning journey is different and **we** can each have a fulfilling outcome!



No matter the circumstances, there is always a way forward.

Stop

- Calm yourself down. Take a few deep breaths.

Think

- Think through the different options that are available for you. Keep things in perspective.
- Remember that the N-Level is one part of your life journey and not the destination.

Do

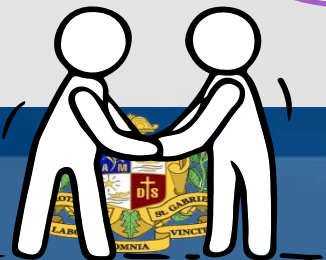
- Approach a trusted adult and seek his/her help. Have a conversation with this person about what would be best for you.
- Make a decision and take action based on your options.

When you receive your results, you may experience a range of emotions.

Managing these emotions well will allow you to stay calm and make rational decisions.

Keep a lookout for some of these signs in your peers or yourself.

How can we support one another?



D

Deliberately avoiding others

I

Increased irritability, restlessness, agitation, stress and anxiety

S

Sending or posting moody messages on social media

T

Talking about death or dying

R

Reacting differently or gradually losing interest in things they used to like

E

Eating more than usual or having a much reduced appetite

S

Sleep pattern changes with difficulty falling asleep or oversleeping

S

Slowing down of energy levels



Ministry of Education
Singapore

If you notice any of these signs in yourself or your friends,
have a chat with your school counsellor or teacher

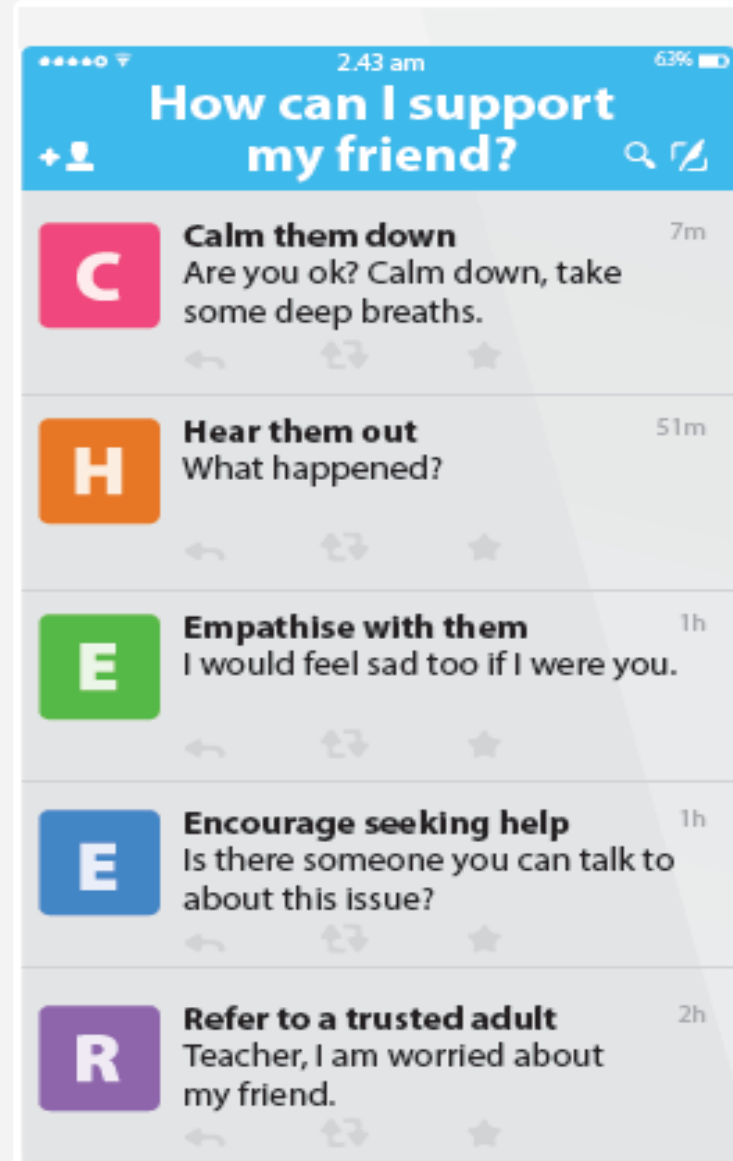
Or contact SOS 24-hour hotline at **1800-221-4444**

Supporting Your Friend

We may each experience different emotions upon receiving the results. You can share your friends' joy by congratulating them or give words of encouragement to friends who may be disappointed with their results.



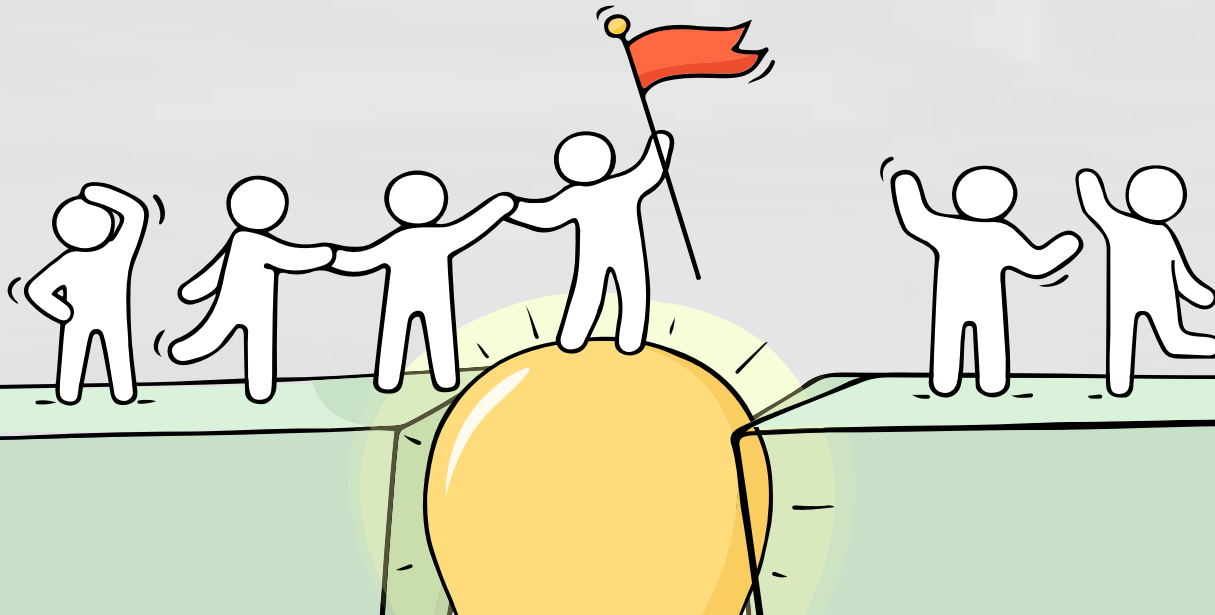
Keep a lookout for your friends in distress. You can support them in the following ways:



Reaching out for help is a sign of strength, not weakness.

*Is there
someone we
can speak with?*

If you have any concerns or are not coping, do reach out to someone you trust and speak with them. It could be a parent/guardian, teacher, School Counsellor or a friend that you can talk to.



Help is readily available for you.

Reach out to an ECG Counsellor!

Making informed decisions is important for successful transition from school to further education.

You may contact **our ECG counsellor, Ms. Leaw Hui Meen** at <https://wa.me/6568329385> for consult.

Approach Ms. Leaw in the Pinnacle **this afternoon (19 Dec)** if you have any queries.

Additionally, you may approach your **Class Mentors, Year Head and school counsellors** if you need advice.



Help is readily available for you.

There are other hotlines and chats available if you are more comfortable seeking help using these platforms.

SOS

SOS provides round the clock emotional support for those in distress, thinking of suicide or affected by suicide. This service is manned by trained volunteers.

Call: **1-767 or 1800-221-444**
(24-hour helpline)

There are also alternative avenues for emotional support through email and text messaging.

Email: **pat@sos.org.sg**
(Response within 48 hours)

SOS Care Text: **www.sos.org.sg**
(6pm – 6am on Mon to Thu and 6pm to 11:59pm on Fri)

Community Health Assessment Team (CHAT)

If you experience prolonged difficulties, CHAT provides personalised and confidential mental health checks and face-to-face consultation for youth aged 16 to 30. To speak with a youth support worker, you can

CHAT Hub at *SCAPE, #05-05
or
Call: **6493 6500/ 6501** or
Email: **CHAT@mentalhealth.sg**



Help is readily available for you.

There are other hotlines and chats available if you are more comfortable seeking help using these platforms.

eC2

eC2 is an e-Counselling Centre where you can talk to a trained counsellor about the issues you are facing, right where you are.

Youths may chat with a counsellor online at:
www.ec2.sg

Monday – Friday
(Excluding Public Holidays): 10am – 12pm & 2pm – 5pm

TOUCHline

TOUCHline is a helpline to provide youths with emotional support and practical advice.

Call: **1800 3772252**

Monday – Friday
(Excluding Public Holidays): 9am – 6pm

mindline.sg

mindline.sg is an online platform that provides tools, tips and resources to help you manage your health and well-being. Explore and find out how you can improve your mental well-being and support your friends too.

Find out more:
www.mindline.sg



Thinking About Your Next Step



**Use 3 Key ECG
Questions To
Help You Get
Started**

Who am I?

The more I know about myself, the better my decisions.

Where do I want to go?

There are many pathways with opportunities for continuous learning and recognition.

How do I get there?

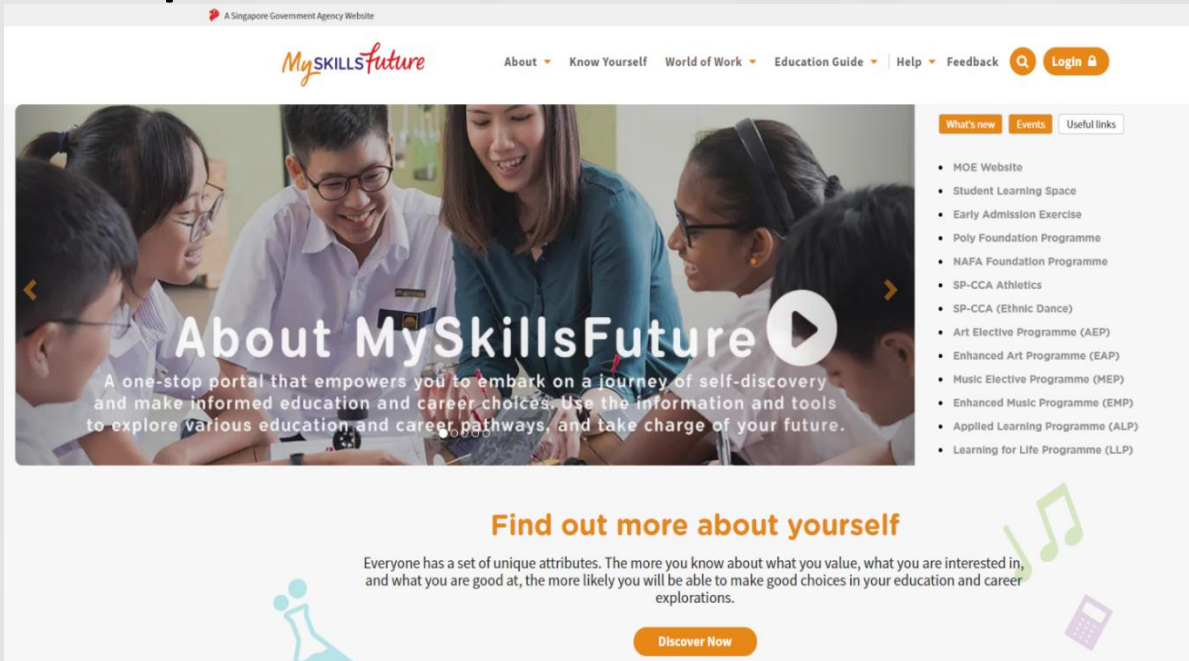
Be resilient, explore various pathways and be open to possibilities.



Resources to help you make informed decisions

MySkillsFuture Student Portal (Secondary)

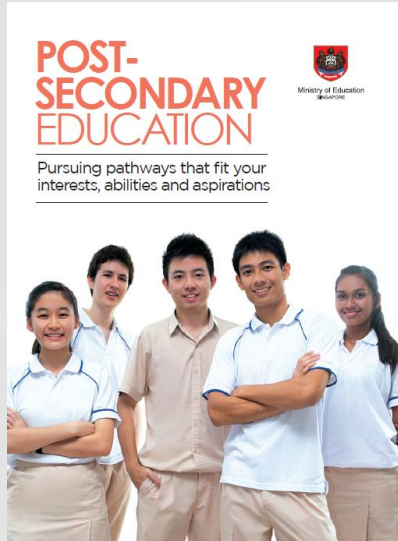
Visit <https://go.gov.sg/MySFSec> for more information on post-GCE N-Level options



The screenshot shows the MySkillsFuture Student Portal (Secondary) website. At the top, there is a navigation bar with the MySkillsFuture logo and links for About, Know Yourself, World of Work, Education Guide, Help, Feedback, and a Login button. Below the navigation bar is a large banner image showing a group of students and a teacher working together. The banner text reads "About MySkillsFuture" and "A one-stop portal that empowers you to embark on a journey of self-discovery and make informed education and career choices. Use the information and tools to explore various education and career pathways, and take charge of your future." To the right of the banner is a list of "What's new" and "Useful links" including MOE Website, Student Learning Space, Early Admission Exercise, Poly Foundation Programme, NAFA Foundation Programme, SP-CCA Athletics, SP-CCA (Ethnic Dance), Art Elective Programme (AEP), Enhanced Art Programme (EAP), Music Elective Programme (MEP), Enhanced Music Programme (EMP), Applied Learning Programme (ALP), and Learning for Life Programme (LLP). Below the banner is a section titled "Find out more about yourself" with a subtext: "Everyone has a set of unique attributes. The more you know about what you value, what you are interested in, and what you are good at, the more likely you will be able to make good choices in your education and career explorations." There is a "Discover Now" button at the bottom of this section.



Resources to help you make informed decisions



Post-Secondary Education booklet

Learn more about the post-secondary landscape

<https://moe.gov.sg/post-secondary/overview>



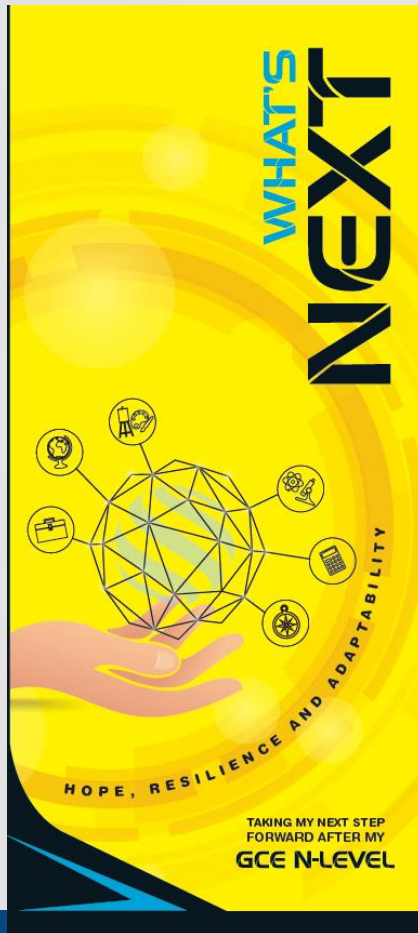
Post-Secondary Admissions Exercises booklet

A list of pathways you could consider after secondary school

<https://moe.gov.sg/post-secondary/admissions>



Resources to help you make informed decisions



What's Next after
GCE N-Level
pamphlet



[https://go.gov.sg/
whats-next-nlevel](https://go.gov.sg/whats-next-nlevel)

Make an online or phone
counselling appointment with the
ECG Centre @ MOE (Grange
Road) through
<https://go.gov.sg/moe-ecg-centre>



Post-Secondary Education

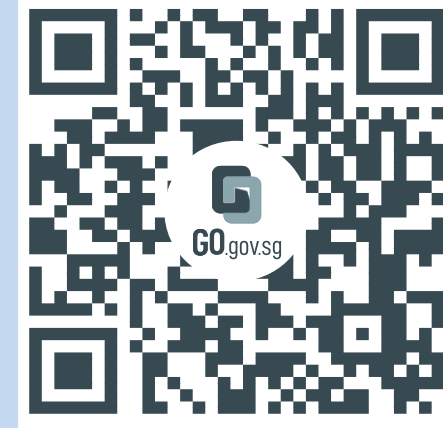
Learn more about the admissions exercises and programmes.

<https://moe.gov.sg/post-secondary/admissions>



Learn more about the post-secondary education institutions.

<https://moe.gov.sg/post-secondary/overview>






Unsure of what's next?

Explore different jobs and industries with **On My Way (OMW)**. Find out if your career goal and educational pathway match your interests, values and ambitions.

Get key info on **jobs and industries** that you aspire to enter, with quick FAQs on **how to get there!**

KNOW IT ALL
COPY URL TO SHARE




INVESTMENT BANKER

Investment Bankers sell securities and provide strategic advice to their clients. They advise clients on raising funds from the equity/debt capital markets and merger and acquisitions (M&A).

Advise corporate clients on product offerings, private equity transactions, mergers and acquisitions, and valuations.
Determine the **best strategy** and place to **raise debt or equity capital**.
Prepare necessary documents to **protect the company and investor**.
Ensure all **government regulations** have been adhered to.
Perform financial modelling using valuation methods.


RESPONSIBILITIES

SKILLS NEEDED



HARD SKILLS

- Financial Modelling (e.g. DCF, Public Comps, M&A Comps)
- Data Analytics
- Strong Mathematical and Numerical Skills



SOFT SKILLS

- Influencing and negotiation skills
- Innovative Problem Solving
- Customer Orientation
- Communication



Peek into a **day in the life of professionals** from various fields with our video series.

Connect with schooling seniors, go on learning journeys, or tune in to our industry panels, we've got programmes planned from Nov 2022 to Feb 2023

Go to <https://go.gov.sg/omw-moerrp2023> and let's get you on your way!

omw
on my way

NYC
NATIONAL
YOUTH
COUNCIL

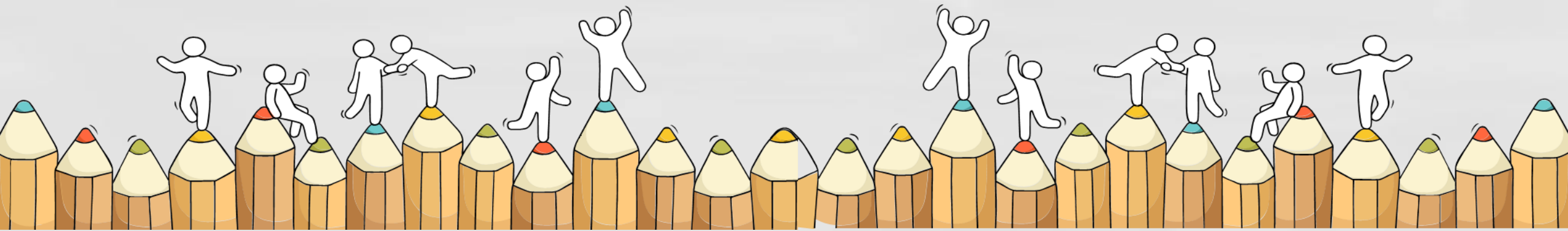


<https://go.gov.sg/omw-moerrp2023>

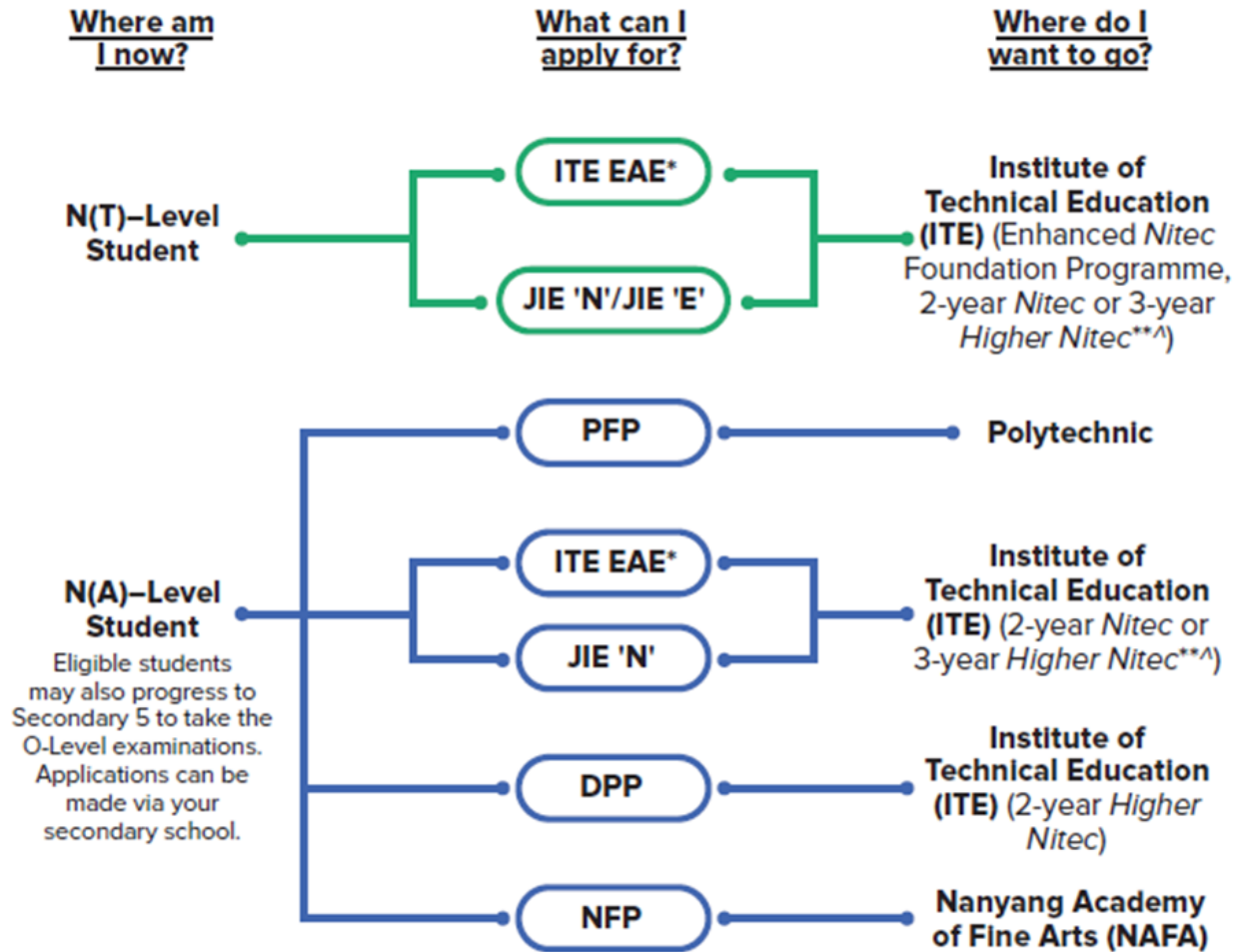


Admission Exercises

Things to note



Admissions Exercises for N-Level Students



JIE 'N'

– GCE 'N' (Technical)/ GCE 'N' (Academic)

JIE 'E'

– GCE 'N' (Technical) with < 2 passes

DPP/ JIE 'H'

– GCE 'N' (Academic)

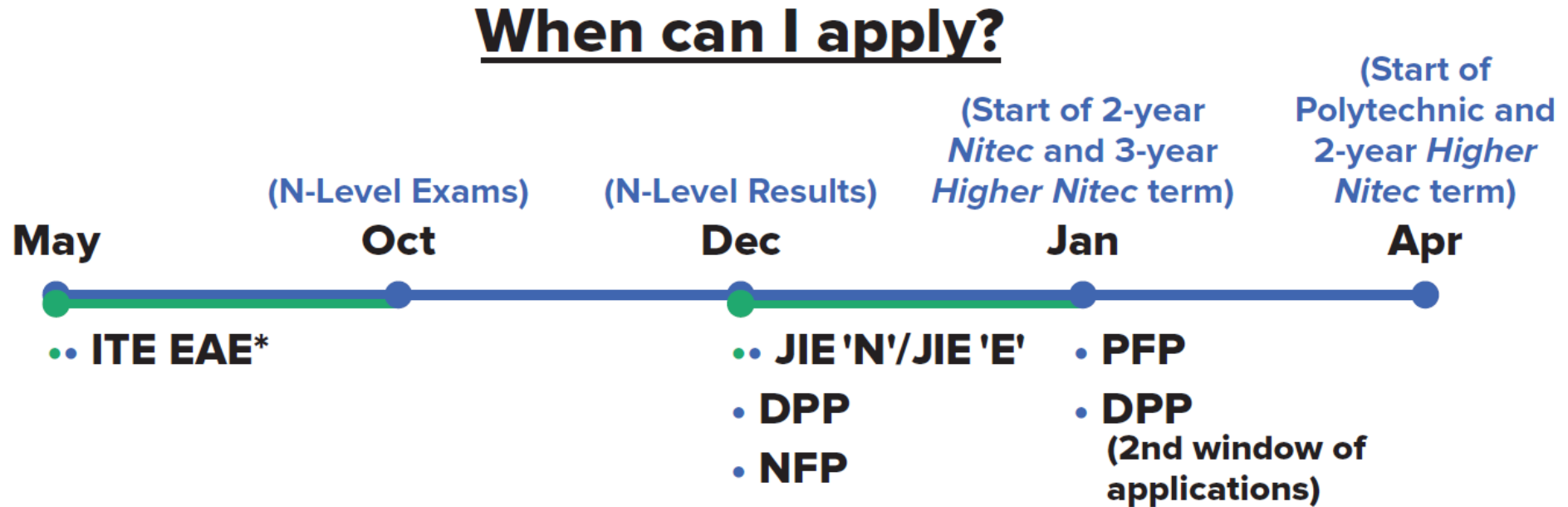
<https://www.moe.gov.sg/post-secondary/admissions>



Source: A Guide to Post-Secondary Admissions Exercises



Admissions Exercises Application Timeline



*Students can apply through these admission exercises before their examinations.

**Certain *Nitec* and *Higher Nitec* courses are available in traineeship mode. For more information on applying to these courses, you can visit <https://www.ite.edu.sg/admissions/traineeship>

^ There are eleven 3-year Higher Nitec courses available for AY2022



Details of Admission Exercises (EAE)

ITE EAE – ITE Early Admissions Exercise

ITE EAE is an aptitude-based admissions exercise that allows students to apply and receive conditional offers for admission to ITE based on their aptitude and interest, prior to receiving their final GCE N-Level examination results. It allows students to demonstrate their aptitudes and interests apart from academic grades, thus allowing a wider range of talents to be recognised.



go.gov.sg/iteeae

For Sec 4N(A) and 4N(T) students with confirmed ITE EAE offers:

- ☐ must honour their EAE offers.
- ☐ not allowed to apply for Nitec courses or 3-year Higher Nitec courses at the Joint Intake Exercise (JIE).
- ☐ But, Sec 4NA can still apply for the Direct-Entry-Scheme to Polytechnic Programme (DPP) after the release of the GCE 'N' Level results, or Polytechnic Foundation Programme (PFP) after the release of the GCE 'O' Level results, if they qualify.

Details of Admission Exercises (DPP)



JIE 'N'/JIE 'E' – Joint Intake Exercise

The JIE 'N' is for 2-year *Nitec* or 3-year *Higher Nitec* courses offered by ITE.

The JIE 'E' is for GCE N(T) students to apply for the 3-year *Nitec* course with Enhanced *Nitec* Foundation Programme.



go.gov.sg/applyjie

JIE 'N'

– GCE 'N' (Technical)/ GCE 'N' (Academic)

JIE 'E'

– GCE 'N' (Technical) with < 2 passes

Details of Admission Exercises (DPP)

DPP – Direct-Entry-Scheme to Polytechnic Programme

DPP allows Secondary 4N(A) students to be admitted directly into a two-year *Higher Nitec* programme at ITE without having to sit for the O-Level examinations or undergo a *Nitec* programme.

DPP students who successfully complete their *Higher Nitec* courses at ITE and attain the required qualifying Grade Point Average (GPA) scores are guaranteed a place in a polytechnic diploma course mapped to their *Higher Nitec* course.



go.gov.sg/applydpp

- ❑ Serves as an alternative to Sec 5
- ❑ Prepares Sec 4N(A) students for progression into selected polytechnic diploma courses via
 - a 2-year Higher Nitec programme at ITE, and
 - a 10-week DPP preparatory course
- ❑ DPP students who successfully complete their Higher Nitec courses **and** attain the minimum qualifying Grade Point Average (GPA) (e.g. 2.5 out of 4) are subsequently guaranteed a place in a polytechnic diploma course mapped to their Higher Nitec course.
- ❑ **Unsuccessful applicants** can apply for progression to Sec 5 N(A) or for Nitec/3-year Higher Nitec courses in 2nd phase

Details of Admission Exercises (DPP)

DPP – Direct-Entry-Scheme to Polytechnic Programme

DPP allows Secondary 4N(A) students to be admitted directly into a two-year *Higher Nitec* programme at ITE without having to sit for the O-Level examinations or undergo a *Nitec* programme.

DPP students who successfully complete their *Higher Nitec* courses at ITE and attain the required qualifying Grade Point Average (GPA) scores are guaranteed a place in a polytechnic diploma course mapped to their *Higher Nitec* course.



go.gov.sg/applydpp

DPP/ JIE 'H' – GCE 'N' (Academic)

- ❑ Students who have sat for both GCE N-Level and GCE O-Level examination subjects **can apply for the DPP prior to the release of their GCE O-Level results.**
 - Use both their GCE N-Level results, and **results from their school-based prelim exams for O-level subjects.**
 - Successful DPP applicants will receive an offer for a DPP course and do not need to return to schools for Sec 5N(A).
- ❑ Upon the release of the O-Level examination results, ITE will verify if applicants have fulfilled the criteria for admission to the DPP.
- ❑ Students who are newly-eligible for the DPP **after the release of the O-Level results in 2023** may also apply in January 2023.

DIRECT-ENTRY-SCHEME TO POLYTECHNIC PROGRAMME (DPP)

5 Things You Need to Know

1. What is the DPP?

- Prepares Sec 4N(A) students for progression into selected polytechnic diploma courses via a 2-year *Higher Nitec* programme at ITE, and a 10-week DPP preparatory course
 - Serves as an alternative to Sec 5
- Students who attain required *Higher Nitec* GPA scores are guaranteed a place in one of the polytechnic diploma courses mapped to the *Higher Nitec* course. (Refer to <https://www.ite.edu.sg/admissions/full-time-courses/higher-nitec-dpp>)
- About 1,200 places offered across 18 *Higher Nitec* courses

2. Am I Eligible for DPP 2023?

- ☐ Sec 4N(A) student who has sat for GCE N-Level exams in 2022
- ☐ Obtained ELMAB3 aggregate of 19 points or less (before deduction of CCA bonus points)
- ☐ Meet subject-specific entry requirements
- ☒ **If you can check all 3 boxes above, you're eligible!**

If you have offered GCE O-Level examination subjects in 2022, you may refer to this table for the equivalent grade to compute your ELMAB3 aggregate:

GCE O-Level Grade	Converted Grade
A1-B3	1
B4-C6	2
D7-E8	3

3. How do I Apply?

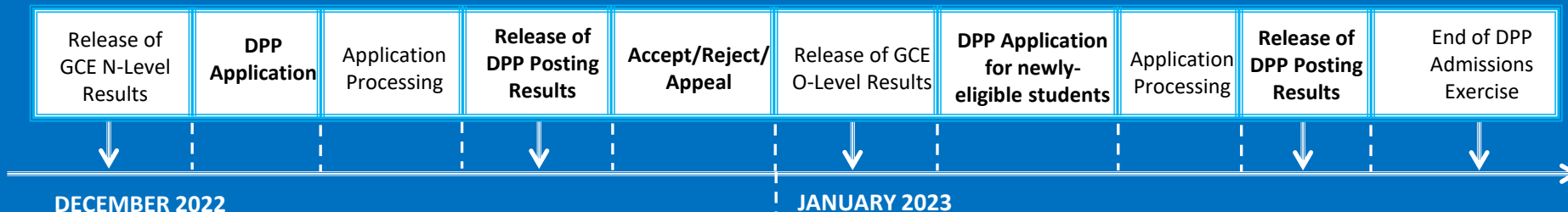
- Upon release of the GCE N-Level results, all DPP-eligible students may apply for DPP *Higher Nitec* courses via the ITE website <https://www.ite.edu.sg>
- You may select up to 12 course choices.
- Remember to provide updated contact details in your application to allow ITE to contact you if necessary.

4. How Will I be Informed of the Outcome?

- You should check your DPP posting results online on the morning of the release of the DPP posting results.
- You will then have to indicate if you wish to accept/reject/appeal the offer.
- If you do not accept the offer by the stipulated date, it will become void and you will be required to continue with your classes in Sec 5 or with your *Nitec* or 3-year *Higher Nitec* course if your application via JIE 'N' is successful

5. What Happens Next?

Upon accepting your DPP offer, you will attend a 10-week DPP preparatory programme that will start in Jan 2023.



More information can be found at: <https://www.ite.edu.sg/admissions/full-time-courses/higher-nitec-dpp>

Details of Admission Exercises (PFP)

PFP – Polytechnic Foundation Programme

PFP is a one-year programme that offers a practice-oriented curriculum taught by polytechnic lecturers to better prepare polytechnic-bound N(A) students for entry into selected polytechnic diploma courses. PFP students are given provisional places in diploma programmes, subject to them passing all modules in the 1-year PFP.



go.gov.sg/pfp

- ❑ Students who are eligible for and intend to apply for PFP **must report for Sec 5N(A) in January** (being eligible for PFP **does not guarantee placement** into a PFP course).
- ❑ Placement in PFP is **subject to the availability of vacancies** and in open competition with other eligible applicants based on merit.
- ❑ Upon release of the **GCE O-Level results in Jan 2023**,
 - More details on the PFP will be made available.
 - After the release of PFP application results, students who have accepted a place in the PFP are still required to attend classes up till the **last Friday of January, i.e. 27 January 2023.**

POLYTECHNIC FOUNDATION PROGRAMME (PFP)

Essential Things You Need to Know

1. What is the PFP?

- A foundation year at the polytechnics that:
 - Prepares well-performing Sec 4N(A) students for progression into respective polytechnic diploma courses
 - Serves as an alternative to Sec 5
- Conducted over two academic semesters at the polytechnics
- Students must pass all PFP modules in order to progress to their respective, pre-selected diploma courses.

2. Am I Eligible for PFP 2023?

You are eligible for the PFP if you:

- ☐ Sat for GCE N-Level exams as a school candidate in 2022
- ☐ Have obtained an ELMAB3 aggregate of 12 points or less (before deduction of CCA bonus points)
- ☐ Met course-specific entry requirements as listed on the PFP website

✓ **If you can check all 3 boxes above, you're eligible!**
(Note: Eligibility does not guarantee you a place in a PFP course)

If you had offered GCE O-Level examination subjects in 2022, you may refer to this table for the equivalent grade to compute your ELMAB3 aggregate:

GCE 'O' Level Grade	Converted Grade
A1-B3	1
B4-C6	2
D7	3

3. How do I Apply?

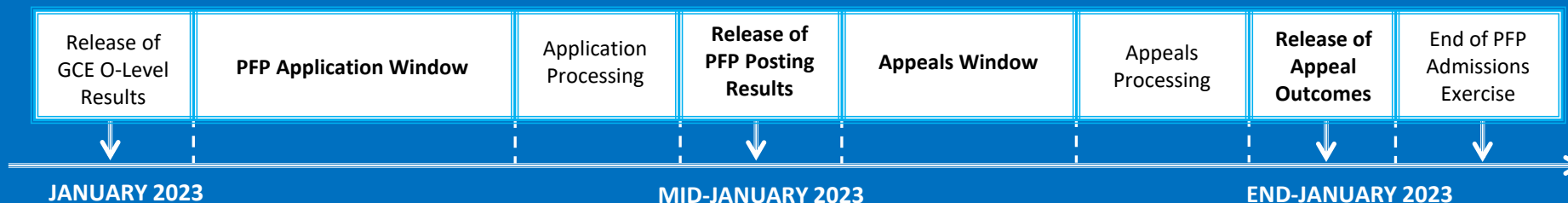
- Upon release of the GCE O-Level results, all PFP-eligible students will receive Form P containing a PFP PIN that allows them to apply for the PFP at this [link](#).
- You may select up to five course choices.
- Remember to provide updated contact details in your application to allow the polytechnics to contact you if necessary.
(Note: You should continue to attend Sec 5 from 3 January 2023 while applying for PFP.)

4. How Will I be Informed of the Outcome?

- You should log in to the PFP portal to check your application outcomes on the day of PFP posting results release.
- You will then have to indicate if you wish to accept/reject/appeal the offer.
- If you do not select any option, your offer will become invalid and you will be required to continue with your classes in Sec 5.
(Note: If your appeal is successful, your original offer will be void regardless of whether you accept the new PFP offer.)

5. What Happens Next?

- If you accept your offer, you will receive an enrolment package from the polytechnics in February/March 2023.
- The PFP year will start in April 2023.



More information can be found at: <https://pfp.polytechnic.edu.sg>

Additional Notes for 4N(A)

For students who are **interested in both the DPP and PFP**, there are 2 options.

Option 1

Apply for and accept DPP offer prior to the release of the GCE O-Level results.

☐ School will contact them to **collect the PFP eligibility form** (Form P) **if** they are **eligible** for PFP after the release of the GCE O-Level results.

☐ Students who decide to **apply for & accept PFP offer** in January will **need to withdraw from the DPP course**.

Applicants can apply for a refund of their DPP enrolment fees, subject to ITE's approval.

Option 2

First progress to Sec 5N(A) & then apply for both the PFP and DPP upon release of the GCE O-Level results.

☐ Students who are offered a place in both the PFP & DPP may only **accept one course offer**.

☐ Students who accept both offers will have both offers voided. If their application to either the PFP or DPP is successful, they will **withdraw from Sec 5N(A) by the end of January 2023**.

Details of Admission Exercises (NFP)

NFP – NAFA Foundation Programme

The NFP is a full-time one-year practice-based programme targeted at N(A) students, to prepare them for the successful enrolment and completion of a diploma programme at NAFA. Students enrolled into the NFP are offered provisional places in their pre-selected diploma courses, and can progress to the first year of the course upon the successful completion of the NFP.



go.gov.sg/applynafafp

Minimum Eligibility Criteria for DPP/ITE/Sec 5N(A)/PFP

Direct-Entry-Scheme to Polytechnic Programme (DPP)	ITE (JIE 'N' / JIE 'E')	Sec 5N(A)	Polytechnic Foundation Programme (PFP)
<ol style="list-style-type: none"> 1. ELMAB3 \leq 19 (exclude CCA bonus points) 2. Met subject-specific Entry requirements for the course offered 3. 'O' Level subjects may be used for computation 	<p>Must fulfill minimum entry requirements of the intended course</p>	<ol style="list-style-type: none"> 1. ELMAB3 \leq 19 (exclude CCA bonus points) 2. At least Grade 5 for <u>all</u> subjects used in computation of ELMAB3 	<ol style="list-style-type: none"> 1. ELMAB3 \leq 12 (exclude CCA bonus points) 2. Met subject-specific Entry requirements for the course offered (min Grade 3) 3. 'O' Level subjects may be used for computation
<ul style="list-style-type: none"> ▪ Apply from 2.30pm today to 5pm on 23 Dec 2022. ▪ Refer to pg. 69 of the 2023 Intake Exercise Booklet for more info. 	<ul style="list-style-type: none"> ▪ Apply from 2.30pm today to 5pm on 23 Dec 2022. ▪ Refer to pg. 7 of the 2023 Intake Exercise Booklet for more info. 	<ul style="list-style-type: none"> ▪ Must be committed to pursue 'O' Level education ▪ Booklist will be posted on the school website by 19 Dec ▪ Report to school on 3 Jan 2023 	<ul style="list-style-type: none"> ▪ Submit online application after release of GCE 'O' Level result in 2023 ▪ Report to school on 3 Jan 2023

Key Dates for Jan 2023 Intake Exercise

IMPORTANT DATES FOR INTAKE ACTIVITIES

Please note the following important dates:

Joint Intake Exercise 'N' (JIE 'N') for 3-Year Higher Nitec / 2-Year Nitec Courses and Joint Intake Exercise 'E' (JIE 'E') for 3-Year Nitec Courses with Enhanced Nitec Foundation Programme

Activity	Date (Tentative)
Application Period	The application will commence following the official announcement of the 2022 Singapore-Cambridge GCE 'N' (Technical) and GCE 'N' (Academic) Level Examination results. The application period will start from 2.30pm on the 1 st day of application and end at 5pm on 22 Dec 2022. The exact application period will be published in the media and ITE website following the release of the GCE 'N' Level Examination results.
Release of Course Interview Details	23 Dec 2022 (from 2pm) - (Please refer to page 53)
Interview for Courses with Interview Requirement	27 Dec 2022 or 28 Dec 2022
Release of Application Results	30 Dec 2022 (from 9am)
Acceptance of Offer	30 Dec 2022 to 4 Jan 2023
Reporting to Colleges and Commencement of Training	9 Jan 2023
Appeal	30 Dec 2022 to 4 Jan 2023
Release of Course Interview Details under Appeal Phase	6 Jan 2023 (from 9am)
Interview for Courses with Interview Requirement under Appeal Phase	9 Jan 2023
Release of Appeal Results	11 Jan 2023 (from 9am)

Joint Intake Exercise 'H' (JIE 'H') for 2-Year Higher Nitec with 10 Weeks Preparatory Courses under Direct Entry Scheme to Polytechnic Programme (DPP)

Activity	Date (Tentative)
Application Period	The application will commence following the official announcement of the 2022 Singapore-Cambridge GCE 'N' (Academic) Level Examination results. The application period will start from 2.30pm on the 1 st day of application and end at 5pm on 22 Dec 2022. The exact application period will be published in the media and ITE website following the release of the GCE 'N' (Academic) Level Examination results.
Release of Application Results	23 Dec 2022 (from 2pm)
Acceptance of Offer	23 Dec 2022 to 28 Dec 2022
Appeal	23 Dec 2022 to 28 Dec 2022
Release of Appeal Results	30 Dec 2022 (from 9am)
Reporting to Colleges and Commencement of Training	9 Jan 2023

Traineeship

Activity	Date (Tentative)
Application Period	The application will start from 2.30pm on the day of release of the 2022 Singapore-Cambridge GCE 'N' Level Examination results and end at 5pm on 23 December 2022. Please refer to The Straits Times advertisement or ITE website following the release of the 2022 GCE 'N' Level Examination results for the exact application period and more details on the intake. Shortlisted applicants need to attend an interview with the company as arranged by ITE.

Note: All the above dates and schedules are tentatively planned. Please refer to the latest changes (if any) in The Straits Times advertisement or ITE website following the release of the 2022 GCE 'N' Level Examination results.

Refer to Pg 6 of **2023**
INTAKE EXERCISE BOOKLET.

For instructions on Application; Checking of Course Interview; Acceptance of Offer; Appeal, refer to the following pages.
(*Register with your personal email*):

- **Full time 3 year Higher NITEC & NITEC Courses: Pg 41- 68**
- **DPP: Pg 91- 113**

Key Dates for Jan 2023 Intake Exercise (Full-time Nitec Courses)

Key Activity	Period for 2-Year and 3-Year Nitec Courses, and 3-Year Higher Nitec courses	Remarks
<u>1st Phase (Main Phase)</u>		
Application	19 Dec 2022 (2.30pm) to 22 Dec 2022 (5pm)	Apply through the Internet at https://www.ite.edu.sg with NRIC / FIN and Date of Birth. You may also apply using SingPass.
Release of Results	30 Dec 2022 at 9am	Check results at https://istudent.ite.edu.sg with web ID and password
Acceptance of Course Offer Period	30 Dec 2022 to 4 Jan 2023	Accept course offer at https://istudent.ite.edu.sg with web ID and password
<u>2nd Phase (Late Application/Appeal Phase)</u>		
Application	30 Dec 2022 to 4 Jan 2023	Apply through the Internet at https://istudent.ite.edu.sg with NRIC / FIN and Date of Birth. You may also apply using SingPass.
Release of Results	11 Jan 2023 at 9am	Check results at https://istudent.ite.edu.sg with web ID and password
Acceptance of Course Offer Period	11 Jan 2023 to 13 Jan 2023	Accept course offer at https://istudent.ite.edu.sg with web ID and password
<u>3rd Phase (Final Top-up Phase)</u>		
Application	1 st Top-up Phase Application - 11 Jan to 19 Jan 2023 2 nd Top-up Phase Application - 27 Jan to 8 Feb 2023	Apply through the Internet at https://istudent.ite.edu.sg with NRIC / FIN and Date of Birth. You may also apply using SingPass.
Release of Results	1 st Top-up Phase - 16 Jan to 27 Jan 2023 2 nd Top-up Phase - 27 Jan to 14 Feb 2023	Check results at https://istudent.ite.edu.sg with web ID and password
Acceptance of Course Offer Period	1 st Top-up Phase - 16 Jan to 27 Jan 2023 2 nd Top-up Phase - 27 Jan to 14 Feb 2023	Accept course offer at https://istudent.ite.edu.sg with web ID and password

Jan 2023 Intake Term Commencement Date: **9 Jan 2023**

Joint Intake Exercise (JIE)

☐ **Interview** (only for selected courses) on Tue 27 Dec 2022 and Wed 28 Dec 2022.

☐ Applicants can log in on Fri 23 Dec 2022 (2pm) to check the interview details.

☐ If you wish to appeal, please **accept the course offered before** applying in the **2nd Phase (Late Application/Appeal Phase)**

☐ Unsuccessful applicants can appeal/reapply under the **2nd Phase (Late Application/Appeal Phase)** and **3rd Phase (Final Application)** for courses with vacancies.

For further enquiries, N-Level school leavers can contact
ITE Hotline: 1800-2222-111

Key Pointers for Students on ITE's Joint Intake Exercise (JIE) for Admission to Nitec Courses

ALL N(T) students and N(A) students (who are not progressing to 5N(A) or repeating 4N(A)) are eligible for JIE.

Keen competition for Nitec and Higher Nitec courses, so use all 12 choices wisely!

Participation in Main Phase is key to secure a place in ITE!

If you are keen in the work & learn option, you may consider applying for the ITE Traineeship programme. Do apply in the Main Phase to avoid missing a place in ITE!

If you are unsuccessful in EAE, make sure you apply in Main Phase to avoid missing a place!

If you have received an additional letter, then you are eligible for the 3-year Nitec Programme (eNFP).

If you are eligible for eNFP, make sure you apply for the 2-year Nitec and 3-year Higher Nitec first before applying for eNFP!

The eNFP helps to build the necessary literacy and numeracy foundations that will enable you to successfully complete your Nitec course!

If you are counter-offered a course, accept it first before appealing for another course you may be more interested in!

Online Application for

2-Year Nitec and 3-Year Higher
Nitec Courses

3-Year Nitec Course with eNFP
(for N(T) courses with 0, 1 pass)


1. Go to <https://www.ite.edu.sg>.

2. Click



icon.

3. Under JIE 'N', click  icon to link to the application website

Under JIE 'E', click  icon to link to the application website

. At the application website:

- Enter NRIC / FIN and Date of Birth to start application. You may also apply using SingPass.
- Upon completion of application, applicants will receive their **web ID and password.**

*Students who are eligible for the 3-Year Nitec Course with eNFP are encouraged to go through both JIE 'E' and JIE 'N' e-application process

Checking of Posting Results/Accept Course Offer

2-Year Nitec and 3-Year Higher
Nitec Courses

3-Year Nitec Course with eNFP
(for N(T) courses with 0, 1 pass)

1. Go to <https://istudent.ite.edu.sg>.
2. Enter **web ID and password**.
3. Click '**Self-Service**' followed by '**Student Admission**' followed by '**View Application Results**' to view the application results and to accept course offer.

The above steps applies to all phases (refer to Slide 26 for dates).
For more details, please refer to ITE Admission Booklet.

Joint Intake Exercise (JIE)

Scenarios	Reason for contact by teachers/ MOE
<i>If you did not apply</i>	to understand your reasons and, where necessary, assist you to complete the ITE application online in the Appeal and Top-Up Phases.
<i>If you applied but had counter offers</i>	to advise/remind you to accept the counter-offer <u>before</u> submitting an appeal.
<i>If you are not enrolled in any course in secondary school or Post-Secondary Ed Institutions (i.e. Poly/ ITE/ NAFA/ LaSalle) by May 2023</i>	For further support and guidance

Additional Information For Students

Should you require further advice or assistance in your applications or future plans, please contact your teachers and ECG Counsellor.

For further inquiries, you may refer to the following hotlines and links for more information and advice on further education:

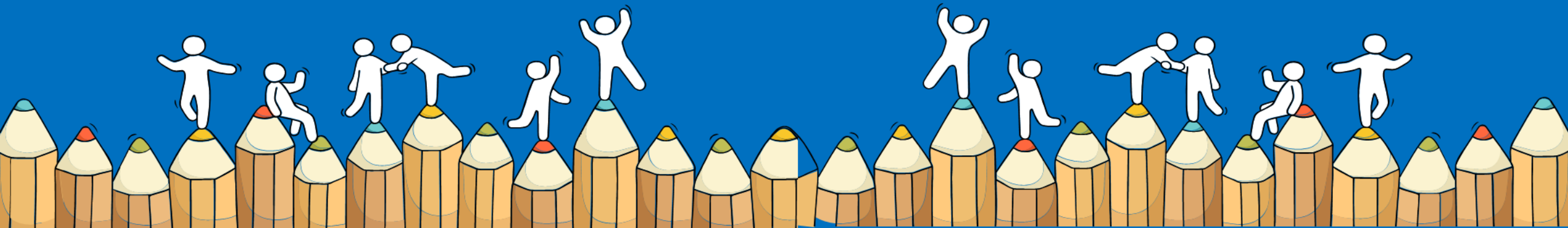
Institute of Technical Education (ITE)	
ITE Hotline (for ITE admissions and courses)	1800 2222 111 training@ite.edu.sg
Education and Career Guidance (ECG)	
ECG Centre @ MOE	<u>6831 1420</u> MOE ECG@moe.gov.sg e-Appointment: https://go.gov.sg/moe-ecg-centre

Additional Information For Students

The information listed in the table below will help you to make an informed decision on which choice of courses you could consider applying at ITE.

S/N	Information	Attachment/Link
1	ITE Factsheet 2022	 2022 Factsheet
2	ITE Course Booklet 2023	https://www.ite.edu.sg/docs/default-source/full-time-courses-doc/ite-course-booklet-2023
3	ITE Traineeship Course Booklet 2023	https://www.ite.edu.sg/docs/default-source/traineeship/ite-traineeship-e-booklet_2023.pdf
4	Information on Progression Opportunities (From Nitec Courses to Higher Nitec and Technical Diploma Courses)	https://www.ite.edu.sg/admissions/full-time-courses/nitec/progression-opportunities
5	Information on Graduate Employment Survey	https://www.ite.edu.sg/admissions/graduate-employment-survey

For Students Planning for Private Education



The 3Rs when deciding on Private Education

Reasons

Why are you
furthering
your studies?

Readiness

How ready
are you to
further your
studies?

Risks

Do you know
the possible
drawbacks?

<https://go.gov.sg/pei-studentresources>



8 Things You Should Know Before You Enrol in A Private School



School Registration

Ensure the school is registered with CPE. Review the school's registration period, expiry date and its overall registration track record.



Partner Institution

Research on the partner institution conferring the diploma or degree, and whether the qualification is recognised by the industry.

EduTrust Certification Scheme

Is the school EduTrust-certified*? Under the scheme, private schools are assessed for their performance in areas such as school management and provision of student support services.



**Schools are required to obtain EduTrust certification in order to offer external degree programmes*

School Premises

Head down to the campus ground to check the facilities and support services. Observe the study environment too.



Fee Protection



Ask if there is any course fee protection so that you will be able to recover unconsumed course fees should the school close down.



Beyond Course fees

Find out about the course syllabus and materials, graduation rates and employment prospects. Approach the alumni to find out what they think of the school.

Teachers

Check if the teachers are qualified to teach the course.



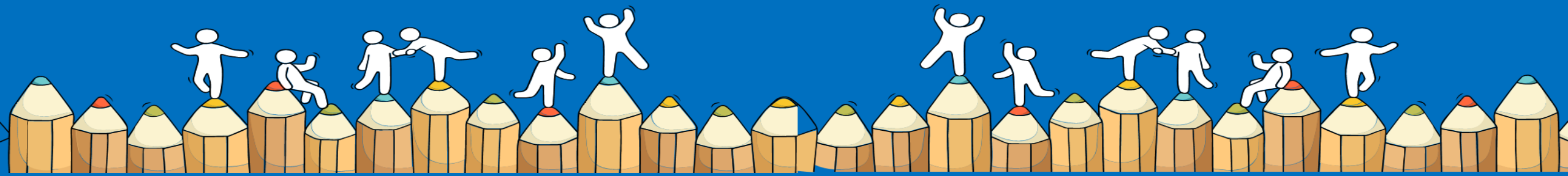
Internship

If industry attachment is included, find out which organisation you will be attached to, the period of attachment and the alternative arrangement should the attachment become unavailable. Verify the information with the organisation as well.



What's NEXT?

After Receiving N-LEVEL Results



How to check your progression status?

Under “Remarks” on your result slip/certificate

- ☐ **“Promoted”** means you are eligible for Sec 5N(A)
 - ☐ Offer for DPP is reflected in Form N
 - ☐ Offer for PFP only in Jan 2023
 - ☐ You are eligible to apply for ITE Nitec/Higher Nitec courses

- ☐ **“Repeat”** means
 - ☐ You are eligible to repeat Sec 4N(A) or
 - ☐ You are eligible to apply for ITE Nitec courses (recommended)

- ☐ **“ITE”** means
 - ☐ You are eligible to apply for ITE Nitec courses



Registration Support in School

Venue: Computer Lab 3

Date	Time
20 Dec 2022 (Tue)	9.30am to 12.00pm 2.30pm to 4.00pm
21 Dec 2022 (Wed)	9.30am to 12.00pm 2.30pm to 4.00pm

Please seek assistance from

- Desktop Engineer if you encounter technical problems.
- Year Head if you need help with the registration process.



Other Administrative Matters

1. Check accuracy of your personal information on your result slip & certificate.*

S/N	Scenario	Instructions
1	Appeal for review of results	Please report to General Office today 3pm to see Mr. Lim.
2	Intention to move to 5N(A)	Submit form (Annex D) to General Office to inform school of intention by 23 Dec 5pm . Subsequently, school will provide you on information for progression to sec 5N(A) in 2023
3	Intention to repeat	Make appointment with school clerk to see Mr. Lim on 21 Dec from 0900 – 1200 at the General Office

2. All ICON Email accounts will be removed by end of year. **Update your contact number (HP)** with your class mentors.



Final Reminders

Check that you have received the following:

- Result slip
- Form N
- Examination Certificate*
- 2023 Intake Exercise Admission Booklet
- ECG materials
- Tote bag



Summary of Important Dates

Admission Exercise	Application Dates	Date of Posting Result	Period for Acceptance/ Rejection of Offer
DPP	Start: 19 Dec 2022, 2.30pm	23 Dec 2022, 9am	Start: 23 Dec 2022 End: 28 Dec 2022
JIE (Main Phase)	End: 22 Dec 2022, 5pm	30 Dec 2022, 9am	Start: 30 Dec 2022 End: 4 Jan 2023


Deadline for Sec 5N(A) form: 23 Dec 2022 (Friday), 5pm




Where to Access the Materials

← → ↺ montfortsec.moe.edu.sg


★ Bookmarks ■ Imported From IE ■ Online Pictures Cre... ■ Montfort ■ ICT Tools for Lessons ■ Brain Breaks ■ CCE ■ MOE ■ CCE LAMPplus 202... ■ (GDSS & MFSS) Exp...




montfortsec_main



montfortsec_sports



montfortsec_ugs



montfortsec_aesthetics_clubs

Connect


with us

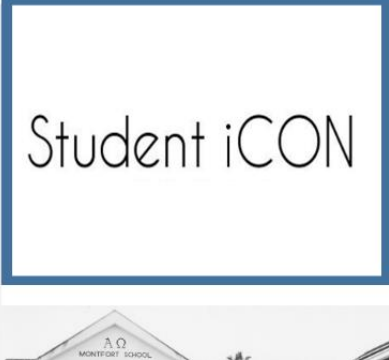
Announcements

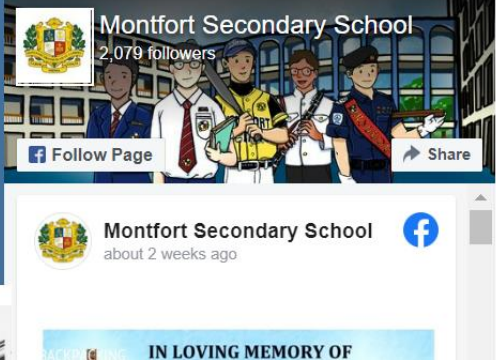
Dec 12 2022 N Level Result release

Dear 2022 Sec 4N(A) & 4N(T) Montfortians,

1. Please be informed that the N Level results will be released on **19 December 2022 (Monday)**.









Where to Access the Materials

Announcements

Dear 2022 Sec 4N(A) & 4N(T) Montfortians,

1. Please be informed that the N Level results will be released on **19 December 2022 (Monday)**.
2. **You are expected to report to School Hall at 1.45 pm in full school uniform and groomed according to the standards laid out in the Praise and Grace Journal for the collection of result slips.**
No inappropriate hairstyle or coloured hair. You will not be allowed into the school until your grooming is rectified.
3. Please refer to [\[Release of 2022 N-Level Results\]](#) for more information.



Please click [here](#) to access the Post Sec Education school website to help you in your decision-making of your journey after N-Level.



The N-Level is not
the destination.

It is part of your
education journey.



All the Best!
Age Quod Agis

